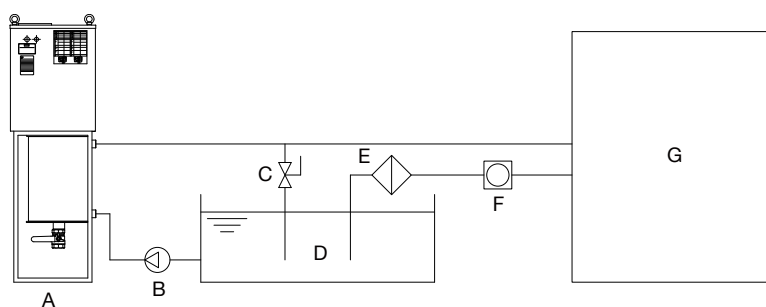


Circulation Diagram

- A: Oil cooler
- B: Pump
- C: Bypass
- D: Oil tank
- E: Filter
- F: Magnetic separator
- G: Machine tool



Specification

Item / Model		HJ-250S	HJ-400S	HJ-600S	HJ-750S	HJ-900S	HJ-1000S	HJ-2RS	
Cooling capacity	KCAL/H 50/60Hz	840/1000	1400/1500	1700/2100	2600/3000	3200/3800	3750/4500	5000/6000	
	W 50/60Hz	980/1170	1630/1750	1980/2450	3030/3500	3700/4400	4360/5240	5820/6980	
	BTU/H 50/60Hz	3360/4000	5600/6000	6800/8400	10000/12000	12800/15200	15000/18000	20000/24000	
Temperature controller	A	Fixed temperature control type (setting range 10~40 °C)							
	B	Differential temperature control type (tracing ambient/machine body temperature, setting range -9.9~+9.9°C)							
Use range	Ambient temperature °C	10~40°C (Standard)							
	Oil temperature °C	10~45°C							
Power source		3Ø 200~230V 50/60Hz							
Motor	Compressor	478	845		1185	1500	1700	2480	
	Fan	50			95	125	180	350	
Piping diameter	Inlet	PT 1"							
	Outlet	PT 1"							
Dimension WxDxH (mm)		368x445x1275	408x454x1420		434x970x1035		547x604x1500	620x1080x1260	
Weight (KG)		90	96		108	150		208	
Noise level		Below 70 dB(A)							Below 80 dB(A)

1. The exterior filter, pump/pump motor and the magnetic separator is not supplied with the cooler.
2. The above cooling capacity is based on the condition of ambient temperature 35°C, oil temperature 35°C with oil type of ISO VG2 .
3. Please contact us for special request on specification.
4. Design and specification are subject to change without prior notice.